



codex

Company



1993 Establishment of Codex company

2003 Establishment of Codex brand

2005 New business facility was built

2007 We have enlarged the warehouse to 2000 pallet places



Smart storehouse



Logistically supported warehouse, equipped with the latest technology

Process your order precisely and in the shortest possible time

Computer supported warehouse guided by terminals with BAR codes

Agricultural
mechanisation

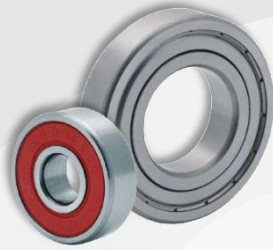
Transport
systems

codex
solutions

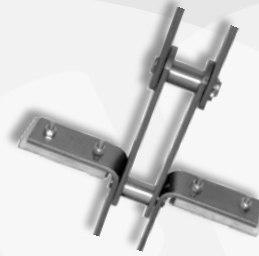
Castors and
wheels, axels

Electromotors,
gearboxes

Bearings and bearing units



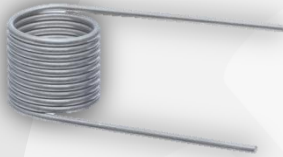
Agricultural chains



Sprockets & platewheels according to drawings



Springs



Oil seals, o-rings, retaining rings



Agricultural mechanisation

Pulleys & locking sets



Belts



Welding wire



Bushes



Bearings EXTREME

High revolution number
Small vibration and low noise
High running accuracy
Quality checked

Grease Shell Alvania RLQ2

Working temperature -30°C to +120°C

Quality grade

- P5 Z3V3
- P6 Z3V3

Range

- 626 – 629
- 607 – 609
- 6000 – 6012
- 6200 – 6212
- 6300 – 6312

ZZ / 2RS

Different cages
Different greases



Bearings EXTREME



Intended use

- Electrical motors
- Household appliances
- Electrical tools

Bearings CODEX



Quality checked
Quality grade **P0 Z1**

Wide assortment

- Ball bearings
- Taper roller bearings
- Cylindrical roller bearings
- Spherical roller bearings
- Spherical plain bearings

Additional offer

- Inch taper roller bearings
- Stainless steel ball bearings
- Agricultural bearings

Bearings according to your drawings

Material

- Chromium steel 100Cr6
- Stainless steel AISI440

Housings



Brand FK

Wide assortment

- UCP
- UCF
- UCFL
- UCFC
- UCT
- UCPH
- UCFB
- SN
- SNU
- SA
- UC
- HC
- SB

Additional offer

- Inch housings

Chains CODEX

Load tested
Pre-stretched
Shot peened

Wide assortment

- Roller chains
- Conveyor chains
- Agricultural chains
- Special chains on demand



Agricultural chains CODEX

Price acceptable

Checked quality, pre-stretched, shot peened

Wide assortment

- Claas
- John Deere
- Geringhoff
- Case
- New Holland
- Deutz-Fahr



Belts CODEX

Classical industrial V-belts

Series Z, A, B, 20, C, 25, D, E

Narrow V / Wedge belts

Series SPZ, SPA, SPB, SPC

Poly-V / Multirib / Serpentine belts

Series PJ, PK, PL, PM

Automobile belts

Series AVX 9,5 in AVX 12,5



Oil seals CODEX

High elasticity

Chemical and temperature resistance
Optimal sealing

Different material

NBR
Silikon
Viton

- With one caulking edge (SC)
- With one caulking edge and dust cap (TC)
- With metal case (TB)
- According to drawings



Retaining rings CODEX

Phosphated

Long life

Standard materials

C60 to \varnothing 30

C75 above \varnothing 30

Assortment

- DIN 471
- DIN 472
- DIN 6799
- DIN 988
- According to drawings



Sprockets and platewheels CODEX



Standard parts

Hardened teeth

Material

- C45

Assortment

- According to drawings
- Idler sprockets
- Pilot bore
- Taper bore

Bushes CODEX



Standard parts

- BK-1
- BK-2
- BK090
- Sinter

Assortment

- According to drawings
- Standard dimension
- Flange bushes

Pulleys and locking sets CODEX



Standard parts

- SPA
- SPB
- SPC
- Timing pulleys

Assortment

- According to drawings
- Pilot bore or taper bore
- Taper bushes for taper bore

Welding wire



TUV and DB approved

Quality levels

- SG2
- SG3

Dimensions

- Ø 0,8mm – Ø 1,2mm

Packing

- 15kg spool
- 250 kg drum

Springs CODEX

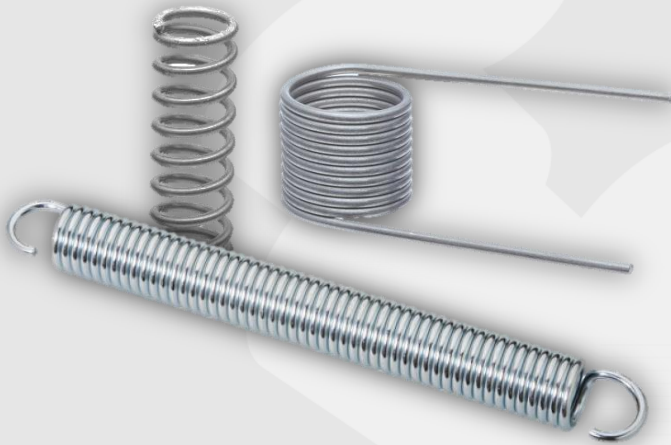
Spring wire EN 10270-1 SM, SH, SD
SS spring wire W.Nr. 1.4310, 1.4401
Sheet metal springs
Other materials available

Dimensions

- wire \varnothing 0,8 mm – \varnothing 1,2 mm
- spring metal sheets to 1,5 mm

Options

- grinded
- zinced
- sand-blasted



Quality assurance

Quality testing procedure



Quality assurance

Random selection

Testing within ISO 2859

Levels of acceptance AQL

- Key items AQL 0.01
- Main items AQL 1.0
- Sub-items AQL 4.0

Testing reports

Pass / fail



Quality assurance

| KEY ITEMS AQL 0.01 | MAIN ITEMS AQL 1.0 | SUB-ITEMS AQL 4.0 |
|--|-------------------------|--|
| Hardness | Δ dmp, Vdp, Vdmp | Δ Bs, VBs |
| Cracking | Δ Dmp, VDp, VDmp | Δ Cs, VCs |
| Designation | Gr | Magnetic rest |
| Noise and vibration of bearings EXTREME | Kia, Sia | Chamfering |
| | Kea, Sea | Appearance |
| | Sd, SD | Packing against corrosion |
| | Grease sealing | Suitable surface roughness |
| | | Noise and vibration of bearings CODEX |

Quality assurance

Bearing passed the testing

| № | | Inspection Item | Nominal (mm) | Tolerance(μm) | | 1 | 2 | 3 | 4 | 5 | 6 | 7 | 8 | 9 | 10 | 11 | 12 | 13 | 14 | 15 | 16 | 17 | 18 | 19 | 20 | | | | | | |
|----|--|-------------------------|---|---------------|-----|-----|----------------|--------|-----------|----|---------|---|---|---|----|----|----|----|----|----|----|----|----|----|----|--|--|--|--|--|--|
| | | | | min | max | | | | | | | | | | | | | | | | | | | | | | | | | | |
| 1 | | Δdmp | 25 | -10 | 0 | OK | | | | | | | | | | | | | | | | | | | | | | | | | |
| | | Δds | | | | OK | | | | | | | | | | | | | | | | | | | | | | | | | |
| | | | | | | MAX | | | | OK | | | | | | | | | | | | | | | | | | | | | |
| | | MIN | | | | OK | | | | | | | | | | | | | | | | | | | | | | | | | |
| 2 | | Vdsp | | 0 | 8 | OK | | | | | | | | | | | | | | | | | | | | | | | | | |
| 3 | | Vdmp | | 0 | 8 | OK | | | | | | | | | | | | | | | | | | | | | | | | | |
| 4 | | ΔDmp | 52 | -13 | 0 | OK | | | | | | | | | | | | | | | | | | | | | | | | | |
| | | ΔDs | | | | OK | | | | | | | | | | | | | | | | | | | | | | | | | |
| | | | | | | MAX | | | | OK | | | | | | | | | | | | | | | | | | | | | |
| | | MIN | | | | OK | | | | | | | | | | | | | | | | | | | | | | | | | |
| 5 | | VDsp | | 0 | 20 | OK | | | | | | | | | | | | | | | | | | | | | | | | | |
| 6 | | VDmp | | 0 | 10 | OK | | | | | | | | | | | | | | | | | | | | | | | | | |
| 7 | | ΔBs | 15 | -120 | 0 | OK | | | | | | | | | | | | | | | | | | | | | | | | | |
| 8 | | ΔCs | 15 | -120 | 0 | OK | | | | | | | | | | | | | | | | | | | | | | | | | |
| 9 | | ΔTs | | | | | | | | | | | | | | | | | | | | | | | | | | | | | |
| 10 | | Sd | | | | | | | | | | | | | | | | | | | | | | | | | | | | | |
| 11 | | SD | | | | | | | | | | | | | | | | | | | | | | | | | | | | | |
| 12 | | Kia | | | | | | | | | | | | | | | | | | | | | | | | | | | | | |
| 13 | | Kea | | | | | | | | | | | | | | | | | | | | | | | | | | | | | |
| 14 | | Sia | | | | | | | | | | | | | | | | | | | | | | | | | | | | | |
| 15 | | Sea | | | | | | | | | | | | | | | | | | | | | | | | | | | | | |
| 16 | | VBs | | 0 | 20 | OK | | | | | | | | | | | | | | | | | | | | | | | | | |
| 17 | | VCs | | 0 | 20 | OK | | | | | | | | | | | | | | | | | | | | | | | | | |
| 18 | | Gr | | 5 | 20 | OK | | | | | | | | | | | | | | | | | | | | | | | | | |
| 19 | | Hardness (HRC) | | 58 | 64 | | 62 / 61.5 | | 61 / 61.5 | | 61 / 62 | | | | | | | | | | | | | | | | | | | | |
| 20 | | Vibration | | dB | 0 | 48 | OK | | | | | | | | | | | | | | | | | | | | | | | | |
| 21 | | | | | | | V _L | | | | | | | | | | | | | | | | | | | | | | | | |
| 22 | | | | | | | V _M | | | | | | | | | | | | | | | | | | | | | | | | |
| 23 | | | | | | | V _H | | | | | | | | | | | | | | | | | | | | | | | | |
| 24 | | Remainder Magnetism(mT) | | 0 | 0.6 | OK | | | | | | | | | | | | | | | | | | | | | | | | | |
| 25 | | Remark | appearance: o.k. marking on seal: 6205 RS CODEX | | | | | | | | | | | | | | | | | | | | | | | | | | | | |
| 26 | | Weight(g.) | | | | | 122.01 | 122.38 | 122.03 | | | | | | | | | | | | | | | | | | | | | | |

Quality assurance

Testing successful

The whole shipment continues to Codex

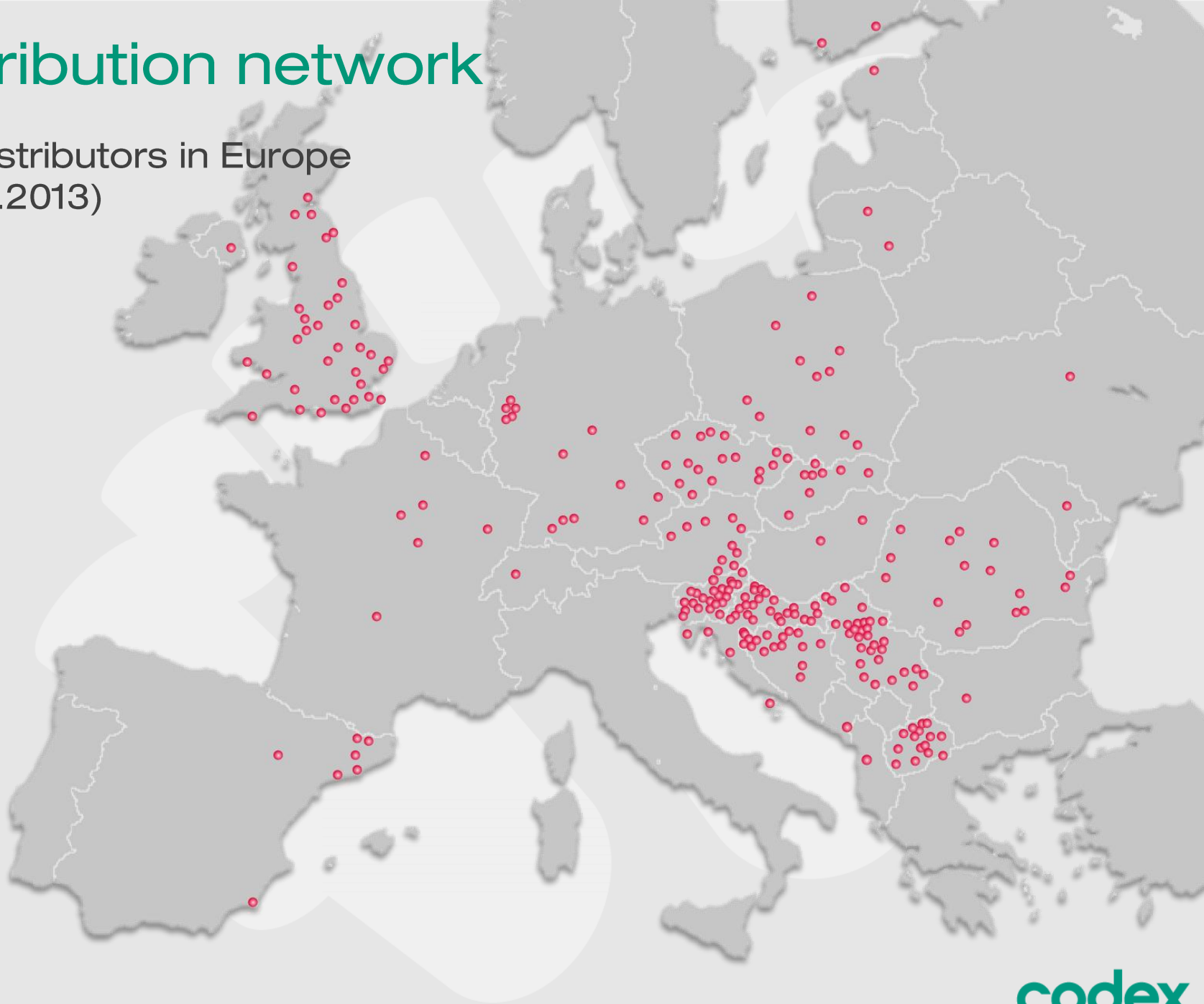
Testing failed

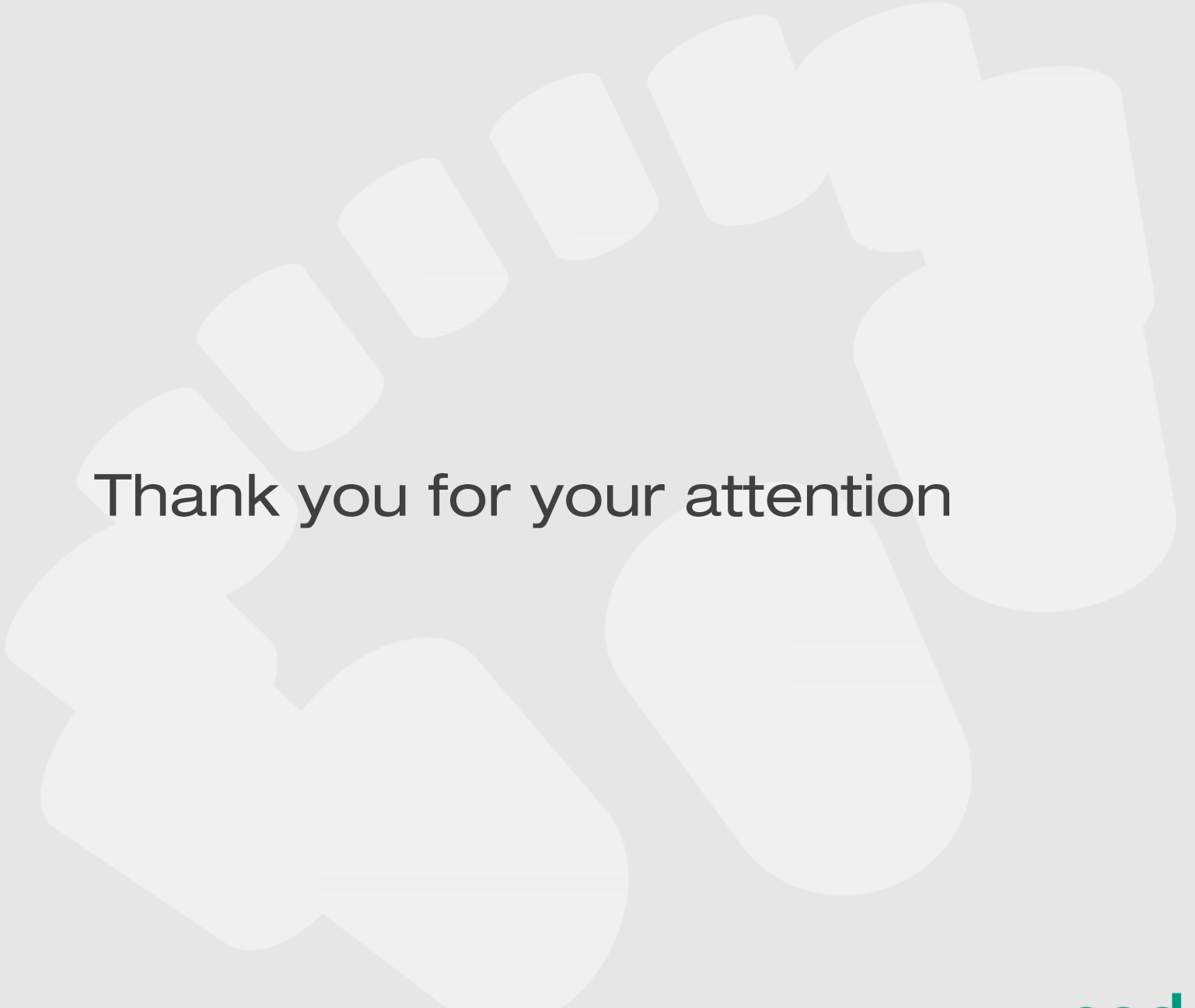
The whole shipment is rejected and sent back to the producer



Distribution network

296 distributors in Europe
(01.09.2013)





Thank you for your attention